



Wednesday, January 4 - Wednesday, January 25, 2017

Classes Meet Monday - Friday

**\*\*\*ALL FEES, HOURS, LOCATIONS AND DATES SUBJECT TO CHANGE WITHOUT NOTICE\*\*\***  
Please check the College of the Desert Website for changes

January 3	Registration and Waitlist close for Winter Intersession 2017 at 12:00 noon
January 3	Registration re-opens at 5:00 p.m. via Web Advisor for available classes
January 4	<b>Winter Intersession Classes Begin</b>
January 5	<b>Last day to ADD a Winter Intersession class</b>
January 5	<b>Last day to drop classes and qualify for refunds.</b> Students enrolled beyond this date are financially responsible for their fees.
January 5	<b>Last day to drop Winter Intersession class <u>without</u> a grade of "W"</b>
January 6	Census
January 16	HOLIDAY - Martin L. King Jr. day observed - CAMPUS CLOSED
January 19	<b>Last day to drop Winter Intersession class <u>with</u> a grade of "W"</b>
January 25	Final Exams/Last day of Winter Intersession

**Registration Levels for Winter Intersession 2017**

For current priority registration levels, please see Page 1

## INTERSESSION 7

SECT	COURSE	TITLE	U	TIME	DAYS	BLDG/RM	INSTRUCTOR
------	--------	-------	---	------	------	---------	------------

### WINTER INTERSESSION classes meet Monday - Friday - Jan. 4 - Jan. 25

#### Air Conditioning/HVAC

**ACR 077** covers methods for conservation of energy in HVACR applications. Advisory: ACR-060  
 9149 ACR 077 ENERGY CONSERVATION 3.0 08:00a-12:30p MTWRF AS107 Galicia,R

**ACR 078** covers Industry practices for safe and efficient handling of common refrigerants. Advisory: ACR-060  
**9169 ACR 078 REFRIGERANT MGMT 3.0 05:00p-09:30p MTWRF AS107 Brown,G**

#### Anthropology

**ANTH 002** is a topical introduction to the cross-cultural study of human societies. Advisory: ENG-070 IGETC: 4A  
 9132 ANTH 002 CULTURAL ANTHRO 3.0 01:00p-04:20p MTWRF SOC14 Mouriquand,L

#### Art

**ART 010** is a general introduction to art across time and diverse cultures. IGETC: 3A

**9152 ART 010 INTRO TO ART 3.0 09:00a-12:20p MTWRF NDIO104 Veloz,A**  
 Note: This OFF-CAMPUS CLASS meets at the Indio Campus, 45524 Oasis Street, Indio.

**9158 ART 010 INTRO TO ART 3.0 06:00p-09:20p MTWRF ART100 Goetz,D**  
 9119 ART 010 INTRO TO ART 3.0 54 TOTAL HOURS TBA FULLONLN Miller,P

Note: Students must access this fully online class at [www.collegeofthedesert.edu/](http://www.collegeofthedesert.edu/) on or before January 4th to begin the course.

**9176 ART 010 INTRO TO ART 3.0 54 TOTAL HOURS TBA FULLONLN Miller,P**  
 Note: Students must access this fully online class at [www.collegeofthedesert.edu/](http://www.collegeofthedesert.edu/) on or before January 4th to begin the course.

#### Astronomy

**A 001** is an introductory survey of planetary, stellar and galactic astronomy designed for students not majoring in science. Advisory: ENG-071 & MATH-040 IGETC: 5A

9179 A 001 DESCRIP ASTRONOMY 3.0 09:00a-12:20p MTWRF S14 Crogman,H

#### Business/Management

**BUMA 010** covers the formation, structure, objectives, and ethics of contemporary business enterprises. Required for Business Administration AS-T. Advisory: ENG-070

9145 BUMA 010 INTRO BUSINESS 3.0 54 TOTAL HOURS TBA FULLONLN Levitt,C

Note: Students must access this fully online class at [www.collegeofthedesert.edu/](http://www.collegeofthedesert.edu/) on or before January 4th, to begin the course.

#### Communication Studies

**COMM 001** students learn to develop an effective style of public communication, including informative, expository, persuasive, extemporaneous, and impromptu forms of speaking. Advisory: ENG-001A IGETC: 1C

9113 COMM 001 PUBLIC SPEAKING 3.0 08:30a-11:50a MTWRF COM103 Christman,C

**9116 COMM 001 PUBLIC SPEAKING 3.0 08:30a-11:50a MTWRF NDIO203 Bashore,D**  
 Note: This OFF-CAMPUS CLASS meets at the Indio Campus, 45524 Oasis Street, Indio.

9112 COMM 001 PUBLIC SPEAKING 3.0 01:00p-04:20p MTWRF COM103 Christman,C

**9123 COMM 001 PUBLIC SPEAKING 3.0 01:00p-04:20p MTWRF NDIO307 Shaw,W**  
 Note: This OFF-CAMPUS CLASS meets at the Indio Campus, 45524 Oasis Street, Indio.

**9114 COMM 001 PUBLIC SPEAKING 3.0 06:00p-09:20p MTWRF COM107 Walker,G**

**COMM 009** students develop better interpersonal communication skills, including conflict resolution, listening, nonverbal communication, and verbal communication. Advisory: ENG-001A

**9155 COMM 009 INTRO INTERPRSNL COM 3.0 01:00p-04:20p MTWRF NDIO203 Ciraulo,S**  
 Note: This OFF-CAMPUS CLASS meets at the Indio Campus, 45524 Oasis Street, Indio.

**9142 COMM 009 INTRO INTERPRSNL COM 3.0 06:00p-09:20p MTWRF COM103 Ciraulo,S**

#### Interession Start and End Dates

All Interession classes begin Wednesday, January 4 and end Wednesday, January 25 unless otherwise noted. Students will complete 1/15 of the course each day, making attendance at all meetings essential for success.

Classes during the Winter Interession will be held at:  
 Palm Desert Campus  
 43500 Monterey Ave.  
 and Indio Campus  
 45524 Oasis Street.  
 In addition, many sections will be offered online.

The Palm Desert Library will be open during Winter Interession.

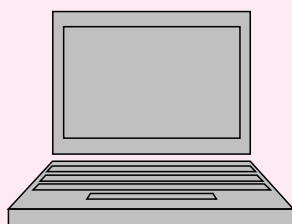
Monday - Thursday  
 8:00 a.m.- 8:00 p.m.  
 Friday  
 8:00 a.m. - 5:00 p.m.

The Indio Campus Library will be open:

Monday - Thursday  
 10:00 a.m. - 1:00 p.m.  
 2:00 p.m. - 6:00 p.m.

**Evening Classes appear in BOLD print throughout this schedule**

## 8 INTERSESSION



Interested in a  
**DISTANCE EDUCATION**  
Interession class?  
Look for Details on  
the College of the  
Desert home page:  
[collegeofthedesert.edu/](http://collegeofthedesert.edu/)

All online students must:

1. Complete the standard admission and registration process.
2. Access the online class (or classes) at [collegeofthedesert.edu/](http://collegeofthedesert.edu/) on or before January 4, 2017 to begin the course.
3. Have their own computers and INTERNET access. The college does **not** provide computers or INTERNET access for students in online classes.

Many courses at COD utilize Canvas. Students are expected to be able to access the Internet and Canvas either from one of the several campus computer labs or from their own computer.

SECT	COURSE	TITLE	U	TIME	DAYS	BLDG/RM	INSTRUCTOR
------	--------	-------	---	------	------	---------	------------

### Computer Information Systems

**CIS 072D** utilizes Microsoft Excel spreadsheet solutions for numerical and accounting-based problems.  
Prerequisite: CIS-010 or BUAC-050

9153	CIS 072D	EXCEL	3.0	90 TOTAL HOURS	TBA	FULLONLN	Romero,J
------	----------	-------	-----	----------------	-----	----------	----------

Note: Students must access this fully online class at [www.collegeofthedesert.edu/](http://www.collegeofthedesert.edu/) on or before January 4th, to begin the course.

### Economics

**ECON 001** discusses Macroeconomics, what economics is and how an economy overall works (or does not work). It also provides an insight into how government policies can affect the performance of an economy. Prerequisite: MATH-054 & ENG-070 Advisory: MATH-040 IGETC: 4B

9135	ECON 001	PRIN/MACROECONOMICS	3.0	54 TOTAL HOURS	TBA	FULLONLN	Saunders,D
------	----------	---------------------	-----	----------------	-----	----------	------------

Note: Students must access this fully online class at [www.collegeofthedesert.edu/](http://www.collegeofthedesert.edu/) on or before January 4th, to begin the course.

### English

**ENG 001A** introduces students to the demands of writing in the academic setting.

Prerequisite: ENG-061 or ENG-071 or ESL-071 IGETC: 1A

9199	ENG 001A	COMPOSITION	4.0	08:00a-12:30p	MTWRF	NDIO201	Hernandez,M
------	----------	-------------	-----	---------------	-------	---------	-------------

Note: This OFF-CAMPUS CLASS meets at the Indio Campus, 45524 Oasis Street, Indio.

9126	ENG 001A	COMPOSITION	4.0	12:00p-04:30p	MTWRF	NDIO207	Voyu,C
------	----------	-------------	-----	---------------	-------	---------	--------

Note: This OFF-CAMPUS CLASS meets at the Indio Campus, 45524 Oasis Street, Indio.

9128	ENG 001A	COMPOSITION	4.0	72 TOTAL HOURS	TBA	FULLONLN	Nolan,R
------	----------	-------------	-----	----------------	-----	----------	---------

Note: Students must access this fully online class at [www.collegeofthedesert.edu/](http://www.collegeofthedesert.edu/) on or before January 4th to begin the course.

**ENG 002** emphasizes analysis and critical thinking skills through the close study of literature.

Prerequisite: ENG-001A IGETC: 1B, 3B

9174	ENG 002	ARG. WRIT. AND CRIT.	4.0	08:00a-12:30p	MTWRF	NDIO308	Benes,H
------	---------	----------------------	-----	---------------	-------	---------	---------

Note: This OFF-CAMPUS CLASS meets at the Indio Campus, 45524 Oasis Street, Indio.

9167	ENG 002	ARG. WRIT. AND CRIT.	4.0	72 TOTAL HOURS	TBA	FULLONLN	Rossi Dean,V
------	---------	----------------------	-----	----------------	-----	----------	--------------

Note: Students must access this fully online class at [www.collegeofthedesert.edu/](http://www.collegeofthedesert.edu/) on or before January 4th to begin the course.

9165	ENG 002	ARG. WRIT. AND CRIT.	4.0	72 TOTAL HOURS	TBA	FULLONLN	Enciso,K
------	---------	----------------------	-----	----------------	-----	----------	----------

Note: Students must access this fully online class at [www.collegeofthedesert.edu/](http://www.collegeofthedesert.edu/) on or before January 4th to begin the course.

**ENG 015** introduces students to the short story, through critical discussion and analysis of its elements, structure, devices and context using short stories from around the world.

Prerequisite: ENG-001A IGETC: 3B

9127	ENG 015	THE SHORT STORY	3.0	08:30a-11:50a	MTWRF	COM201	Rawnsley,R
------	---------	-----------------	-----	---------------	-------	--------	------------

### History

**HIST 017** is a survey of the political and social development of the United States from the discovery of America through the Reconstruction Period. Advisory: ENG-071 IGETC: 3B, 4F

9191	HIST 017	U.S.HISTORY	3.0	08:30a-11:50a	MTWRF	SOC8	Hanes,W
------	----------	-------------	-----	---------------	-------	------	---------

9172	HIST 017	U.S.HISTORY	3.0	01:00p-04:20p	MTWRF	NDIO306	Benavides,E
------	----------	-------------	-----	---------------	-------	---------	-------------

Note: This OFF-CAMPUS CLASS meets at the Indio Campus, 45524 Oasis Street, Indio.

9198	HIST 017	U.S.HISTORY	3.0	54 TOTAL HOURS	TBA	FULLONLN	Simpson,R
------	----------	-------------	-----	----------------	-----	----------	-----------

Note: Students must access this fully online class at [www.collegeofthedesert.edu/](http://www.collegeofthedesert.edu/) on or before January 4th to begin the course.

**HIST 018** is a survey of the political and social development of the United States from the Reconstruction Period to the present. Advisory: ENG-071 IGETC: 3B, 4F

9143	HIST 018	U.S.HISTORY	3.0	08:30a-11:50a	MTWRF	NDIO306	Benavides,E
------	----------	-------------	-----	---------------	-------	---------	-------------

Note: This OFF-CAMPUS CLASS meets at the Indio Campus, 45524 Oasis Street, Indio.

9148	HIST 018	U.S.HISTORY	3.0	01:00p-04:20p	MTWRF	SOC8	Collins,O
------	----------	-------------	-----	---------------	-------	------	-----------

9192	HIST 018	U.S.HISTORY	3.0	54 TOTAL HOURS	TBA	FULLONLN	Zappia,D
------	----------	-------------	-----	----------------	-----	----------	----------

Note: Students must access this fully online class at [www.collegeofthedesert.edu/](http://www.collegeofthedesert.edu/) on or before January 4th to begin the course.

9194	HIST 018	U.S.HISTORY	3.0	54 TOTAL HOURS	TBA	FULLONLN	Hanes,W
------	----------	-------------	-----	----------------	-----	----------	---------

Note: Students must access this fully online class at [www.collegeofthedesert.edu/](http://www.collegeofthedesert.edu/) on or before January 4th to begin the course.

M = Mon; T = Tues; W = Wed; MW = Mon & Wed; R = Thurs; TR = Tues & Thurs; F = Fri; S = Saturday; SU = Sunday  
IGETC courses in this schedule of classes are printed in color, and the IGETC requirement satisfied by each course is listed along with course prerequisites.

## INTERSESSION 9

SECT	COURSE	TITLE	U	TIME	DAYS	BLDG/RM	INSTRUCTOR
------	--------	-------	---	------	------	---------	------------

### WINTER INTERSESSION classes meet Monday - Friday - Jan. 4 - Jan. 25

#### Kinesiology

**KINE 001** includes the application of knowledge and development of basic skills in First Aid and Basic Life Support. Advisory: ENG-070

9111	KINE 001	FIRST AID AND SAFETY	3.0	08:30a-11:50a	MTWRF	SOC9	STAFF
------	----------	----------------------	-----	---------------	-------	------	-------

Note: During the term, students must be prepared to purchase supplies for a basic first aid kit.

**KINE 006** encompasses a wide spectrum of issues relating to developing skills for personal protection, health and fitness. Students learn how to assess potentially dangerous situations and how they can be avoided, as well as learning how to use their bodies and voices as weapons. Students will learn theory and design of current fitness and health trends to improve their overall wellness.

9166	KINE 006	WOMEN'S SELF DEFENSE	3.0	08:30a-11:50a	MTWRF	KINE103	Ansley,W
▶9164	KINE 006	WOMEN'S SELF DEFENSE	3.0	08:30a-11:50a	MTWRF	NDIO105	Garcia,N

Note: This OFF-CAMPUS CLASS meets at the Indio Campus, 45524 Oasis Street, Indio.

**KINE 010** is a survey course that focuses on the exploration of major topics involved with the maintenance of optimum health for the individual and society. Advisory: ENG-070

9168	KINE 010	PERS&COMM HEALTH	3.0	08:30a-11:50a	MTWRF	MSTC250	Vineyard,R
------	----------	------------------	-----	---------------	-------	---------	------------

#### Mass Communication

**MC 001** introduces students to the contributions and influences of mass media in popular culture. Advisory: ENG-071 IGETC: 4G

9124	MC 001	INTRO TO MASS MEDIA	3.0	08:30a-11:50a	MTWRF	CMH4	Jackson,L
------	--------	---------------------	-----	---------------	-------	------	-----------

#### Mathematics

**MATH 060** covers adding, subtracting, multiplying, and dividing whole numbers, signed numbers, fractions, and decimals with an introduction of variable expressions to prepare students for algebra.

Prerequisite: MATH-070 Advisory: ENG-070

9103	MATH 060	PRE-ALGEBRA	3.0	08:00a-12:30p	MTWRF	SOC12	Kleinfelter,D
------	----------	-------------	-----	---------------	-------	-------	---------------

Note: First Year Experience (FYE) students will be given first priority. For more information about enrolling in the FYE program, contact Katie Chartier, 760 674-7635.

▶9115	MATH 060	PRE-ALGEBRA	3.0	08:00a-12:30p	MTWRF	NDIO206	Podlesny,B
-------	----------	-------------	-----	---------------	-------	---------	------------

Note: This OFF-CAMPUS CLASS meets at the Indio Campus, 45524 Oasis Street, Indio.

9117	MATH 060	PRE-ALGEBRA	3.0	01:00p-05:30p	MTWRF	SOC12	Kalpakoff,S
------	----------	-------------	-----	---------------	-------	-------	-------------

9109	MATH 060	PRE-ALGEBRA	3.0	01:00p-05:30p	MTWRF	COM105	Palafox,D
------	----------	-------------	-----	---------------	-------	--------	-----------

▶9178	MATH 060	PRE-ALGEBRA	3.0	01:00p-05:30p	MTWRF	NDIO206	McJilton,M
-------	----------	-------------	-----	---------------	-------	---------	------------

Note: This OFF-CAMPUS CLASS meets at the Indio Campus, 45524 Oasis Street, Indio.

9102	MATH 060	PRE-ALGEBRA	3.0	05:30p-10:00p	MTWRF	SOC15	Musselman,M
------	----------	-------------	-----	---------------	-------	-------	-------------

▶9108	MATH 060	PRE-ALGEBRA	3.0	05:30p-10:00p	MTWRF	NDIO204	Miller,L
-------	----------	-------------	-----	---------------	-------	---------	----------

Note: This OFF-CAMPUS CLASS meets at the Indio Campus, 45524 Oasis Street, Indio.

**MATH 070** covers adding, subtracting, multiplying, and dividing rational numbers. Advisory: ENG-070

9136	MATH 070	ARITHMETIC	2.0	09:00a-12:20p	MTWRF	SOC15	Kalpakoff,S
------	----------	------------	-----	---------------	-------	-------	-------------

Note: First Year Experience (FYE) students will be given first priority. For more information about enrolling in the FYE program, contact Katie Chartier, 760 674-7635.

▶9125	MATH 070	ARITHMETIC	2.0	09:00a-12:20p	MTWRF	NDIO204	McJilton,M
-------	----------	------------	-----	---------------	-------	---------	------------

Note: This OFF-CAMPUS CLASS meets at the Indio Campus, 45524 Oasis Street, Indio.

9159	MATH 070	ARITHMETIC	2.0	01:30p-04:50p	MTWRF	SOC15	Kleinfelter,D
------	----------	------------	-----	---------------	-------	-------	---------------

▶9188	MATH 070	ARITHMETIC	2.0	01:00p-04:20p	MTWRF	NDIO204	Podlesny,B
-------	----------	------------	-----	---------------	-------	---------	------------

Note: This OFF-CAMPUS CLASS meets at the Indio Campus, 45524 Oasis Street, Indio.

9121	MATH 070	ARITHMETIC	2.0	06:00p-09:20p	MTWRF	SOC12	Palafox,D
------	----------	------------	-----	---------------	-------	-------	-----------

#### Music

**MUS 010** is a survey of music history and performance practice. IGETC: 3A

9141	MUS 010	INTRO TO MUSIC	3.0	54 TOTAL HOURS TBA	FULLONLN	Stupin,M
------	---------	----------------	-----	--------------------	----------	----------

Note: Students must access this fully online class at [www.collegeofthedesert.edu/](http://www.collegeofthedesert.edu/) on or before January 4th to begin the course.

9154	MUS 010	INTRO TO MUSIC	3.0	54 TOTAL HOURS TBA	FULLONLN	Stupin,M
------	---------	----------------	-----	--------------------	----------	----------

Note: Students must access this fully online class at [www.collegeofthedesert.edu/](http://www.collegeofthedesert.edu/) on or before January 4th to begin the course.

**Tutoring and Academic Skills Center features Online tutoring for all COD students**

College of the Desert provides students with access to online tutoring services from *Smarthinking*. With *Smarthinking*, students can chat with a live tutor up to 24 hours a day from ANY internet connection.

Tutors are available to work with you in a wide range of subjects including writing (English, or for any course), math (basic math through Calculus II), accounting, statistics, finance, economics, biology, nursing and allied health, physics, chemistry, office applications, and Spanish. You can also submit completed drafts of your writing assignments from any course to *Smarthinking's* Writing Center for a tutor to review. The tutor will provide you with detailed, personalized feedback about your paper, typically within 24 hours.

Go to this web site to sign up! <http://collegeofthedesert.edu/students/asc/Pages/eTutoring.aspx>

## 10 INTERSESSION

Students at off-campus sites should allow sufficient travel time to arrive on time and remain for the duration of the class.

Non-Participation and excessive absences may be grounds for being dropped from a course.

### Film Festival RTV-008 January 6 - 15

Join thousands of film fans to view and analyze a dozen films from around the world as part of the Palm Springs International Film Festival. See RTV-008 for registration details.

### BEEPS Cafe

Check out BEEPS when you are feeling hungry. Food selections range from burritos, pizzas, and hamburgers to omelettes.

Winter Intersession hours:  
Monday - Friday  
7:30 a.m. - 2:00 p.m.

SECT	COURSE	TITLE	U	TIME	DAYS	BLDG/RM	INSTRUCTOR
------	--------	-------	---	------	------	---------	------------

**MUS 012** is a basic course in music theory designed to develop an understanding of notation, rhythm, pitch, keys, scales, intervals, triads and music terminology. IGETC: 3A

9140	MUS 012	FUNDAMENTALS/MUSIC	3.0	54 TOTAL HOURS	TBA	FULLONLN	Fesmire,A
------	---------	--------------------	-----	----------------	-----	----------	-----------

Note: Students must access this fully online class at [www.collegeofthedesert.edu/](http://www.collegeofthedesert.edu/) on or before January 4th to begin the course.

## Natural Resources

**NR 001** is an environmental science course examining the impacts of humans on this planet. Topics covered include ecology, water, pollution, atmospheric change, energy and population. Advisory: ENG-070 and concurrent enrollment in NR-001L IGETC: 5B

9161	NR 001	CONSV NATRL RESRS	3.0	54 TOTAL HOURS	TBA	FULLONLN	Morgan,E
------	--------	-------------------	-----	----------------	-----	----------	----------

Note: Students must access this fully online class at [www.collegeofthedesert.edu/](http://www.collegeofthedesert.edu/) on or before January 4th to begin the course.

## Philosophy

**PHIL 012** studies the great religions in philosophical perspective. IGETC: 3B, 4G

9156	PHIL 012	RELIGIONS WORLD	3.0	06:00p-09:20p	MTWRF	SOC14	Smith,M
------	----------	-----------------	-----	---------------	-------	-------	---------

**PHIL 013** Death - The Final Frontier

9122	PHIL 013	PERSP ON DEATH/DYING	3.0	08:30a-11:50a	MTWRF	SOC14	Waddell,J
------	----------	----------------------	-----	---------------	-------	-------	-----------

## Political Science

**PS 001** is an introduction to the principles, organization and politics of the National Government of the United States, including the study of State and local government. Advisory: ENG-070 IGETC: 4H

9151	PS 001	INTRO TO GOVERNMENT	3.0	08:30a-11:50a	MTWRF	SOC10	STAFF
------	--------	---------------------	-----	---------------	-------	-------	-------

9129	PS 001	INTRO TO GOVERNMENT	3.0	01:00p-04:20p	MTWRF	NDIO105	Cosgrove,K
------	--------	---------------------	-----	---------------	-------	---------	------------

Note: This OFF-CAMPUS CLASS meets at the Indio Campus, 45524 Oasis Street, Indio.

9187	PS 001	INTRO TO GOVERNMENT	3.0	54 TOTAL HOURS	TBA	FULLONLN	Simpson,R
------	--------	---------------------	-----	----------------	-----	----------	-----------

Note: Students must access this fully online class at [www.collegeofthedesert.edu/](http://www.collegeofthedesert.edu/) on or before January 4th to begin the course.

## Psychology

**PSY 001** is an introduction to psychology and defines the principles and theories governing the scientific study of affect, behavior and cognition, which include developmental psychology, states of consciousness, psychotropic agents, learning, memory, motivation, social psychology, and psychological disorders.

Advisory: ENG-071 IGETC: 4I

9173	PSY 001	GEN PSYCHOLOGY	3.0	06:00p-09:20p	MTWRF	SOC8	Elliott,G
------	---------	----------------	-----	---------------	-------	------	-----------

9131	PSY 001	GEN PSYCHOLOGY	3.0	54 TOTAL HOURS	TBA	FULLONLN	Jones,C
------	---------	----------------	-----	----------------	-----	----------	---------

Note: Students must access this fully online class at [www.collegeofthedesert.edu/](http://www.collegeofthedesert.edu/) on or before January 4th to begin the course.

9139	PSY 001	GEN PSYCHOLOGY	3.0	54 TOTAL HOURS	TBA	FULLONLN	Howard,J
------	---------	----------------	-----	----------------	-----	----------	----------

Note: Students must access this fully online class at [www.collegeofthedesert.edu/](http://www.collegeofthedesert.edu/) on or before January 4th to begin the course.

**PSY 003** is a life span course that focuses on the behavioral patterns found at each level of normal human development, including the interrelationships of psychological, sociological, cognitive, and physical development from birth to senescence. Advisory: ENG-071, PSY-001 IGETC: 4I

9134	PSY 003	DEVLPMNTL PSYCHOLOGY	3.0	01:00p-04:20p	MTWRF	CMH1	Emerson,L
------	---------	----------------------	-----	---------------	-------	------	-----------

9137	PSY 003	DEVLPMNTL PSYCHOLOGY	3.0	06:00p-09:20p	MTWRF	CMH1	Emerson,L
------	---------	----------------------	-----	---------------	-------	------	-----------

## Radio-Television

**RTV 008** is a survey of narrative and documentary films from around the world. Advisory: RTV-006 IGETC: 3A

9186	RTV 008	CONTMP WORLD FILM	3.0	54 TOTAL HOURS	TBA		Gladych,M
------	---------	-------------------	-----	----------------	-----	--	-----------

Note: 1 week class: 01/06 - 01/15

Note: This class will be offered in conjunction with The Palm Springs International Film Festival.

Students must be available days and evenings, January 6 - 15.



For information contact [mgladych@collegeofthedesert.edu](mailto:mgladych@collegeofthedesert.edu)

## INTERSESSION 11



### WINTER INTERSESSION classes meet Monday - Friday - Jan. 4 - Jan. 25

#### Sociology



**SOC 001** is a survey of the characteristics of social life, the processes of social interaction, and the tools of sociological investigation. Advisory: ENG-070 IGETC: 4J

- ▶9133 SOC 001 INTRO SOCIOLOGY 3.0 01:00p-04:20p MTWRF NDIO308 Black,A  
Note: This OFF-CAMPUS CLASS meets at the Indio Campus, 45524 Oasis Street, Indio.
- 9175 SOC 001 INTRO SOCIOLOGY 3.0 54 TOTAL HOURS TBA FULLONLN Tortoris,N  
 Note: Students must access this fully online class at [www.collegeofthedesert.edu/](http://www.collegeofthedesert.edu/) on or before January 4th to begin the course.
- 9177 SOC 001 INTRO SOCIOLOGY 3.0 54 TOTAL HOURS TBA FULLONLN Tortoris,N  
 Note: Students must access this fully online class at [www.collegeofthedesert.edu/](http://www.collegeofthedesert.edu/) on or before January 4th to begin the course.

**SOC 003** is a study of the fundamental concepts and techniques of statistical analysis that are encountered in all areas of Social Science. Prerequisite: MATH-040 and ENG-071 IGETC: 2A\*


- 9182 SOC 003 FUND OF STATISTICS 3.0 54 TOTAL HOURS TBA FULLONLN Cathcart,J  
 Note: Students must access this fully online class at [www.collegeofthedesert.edu/](http://www.collegeofthedesert.edu/) on or before January 4th to begin the course.
- 9197 SOC 003 FUND OF STATISTICS 3.0 54 TOTAL HOURS TBA FULLONLN Tortoris,N  
 Note: Students must access this fully online class at [www.collegeofthedesert.edu/](http://www.collegeofthedesert.edu/) on or before January 4th to begin the course.

**SOC 004** is an introduction to the process of thinking, logic, and reasoning from a sociological perspective. The goal is to develop the critical understanding and effective analysis of arguments, personal problems, and social issues. Prerequisite: ENG-001A & MATH-050 or MATH-054 IGETC: 1B

- ▶9171 SOC 004 SOC/CRIT THINKING 3.0 01:00p-04:20p MTWRF NDIO305 Cathcart,J  
Note: This OFF-CAMPUS CLASS meets at the Indio Campus, 45524 Oasis Street, Indio.
- 9147 SOC 004 SOC/CRIT THINKING 3.0 54 TOTAL HOURS TBA FULLONLN Black,A  
 Note: Students must access this fully online class at [www.collegeofthedesert.edu/](http://www.collegeofthedesert.edu/) on or before January 4th to begin the course.
- 9181 SOC 004 SOC/CRIT THINKING 3.0 54 TOTAL HOURS TBA FULLONLN Black,A  
 Note: Students must access this fully online class at [www.collegeofthedesert.edu/](http://www.collegeofthedesert.edu/) on or before January 4th to begin the course.

#### Theatre Arts

**TA 001** is a survey of theatre from its origins to the present time. IGETC: 3B

- 9183 TA 001 INTRO TO THEATRE 3.0 54 TOTAL HOURS TBA FULLONLN Thompson,M  
 Note: Students must access this fully online class at [www.collegeofthedesert.edu/](http://www.collegeofthedesert.edu/) on or before January 4th to begin the course.

**Tutoring and Academic Skills Centers**

**Palm Desert TASC**  
760 773-2557  
During Winter Intersession the computer lab is open  
Monday - Thursday  
9:00 a.m. - 4:00 p.m.  
Friday 9:00 a.m. - Noon

Tutoring to be determined.  
Call TASC for details.

**Indio EVC TASC**  
760 346-8041 Ext. 6698  
Monday - Thursday  
8:00 a.m. - 6:00 p.m.  
Friday 9:00 a.m. - 1:00 p.m.  
Closed Saturday & Sunday

**BOOKSTORE**  
(760) 773-2564  
[Codesert.bkstr.com](http://Codesert.bkstr.com)

The College of the Desert Bookstore, located on the first floor of the Cravens Student Services Center, contains all needed course materials, whether required or optional. Both new and used textbooks are available for purchase, and there are also many textbooks available for rent and in digital format.

The Bookstore also carries a wide variety of school supplies (imprinted and non-imprinted), in addition to software, electronics, and Samsung Tablets. BarCharts and other reference materials are also available to assist students in their academic endeavors.

In addition, College of the Desert clothing and gift items are available, as well as a variety of snacks, drinks, and sundries.

Regular Bookstore hours are Monday - Thursday 8:00 am - 7:00 pm, Friday 8 a.m. - 3 p.m.

The Indio Campus Bookstore will be open as well. Please check with the location for hours during Intersession.

The bookstore has extended hours during the first two weeks of each of each semester. For more information, call 760 773-2564, or visit our website at [collegeofthedesert.edu](http://collegeofthedesert.edu)

The bookstore website can also be accessed from the college website. Near the top right of the main page, click on the "Student Services" tab, and from there click on "bookstore".

**Evening Classes appear in BOLD print throughout this schedule**